



REFERENCE INFORMATION NOTE;

ATAKAŞ LİMAN A.Ş PORT ENTERPRISE Domestic Wastewater Treatment Plant

Capacity : 300 person/day

Wastewater Rate : 60 m³/day (The Construction of Turnkey)

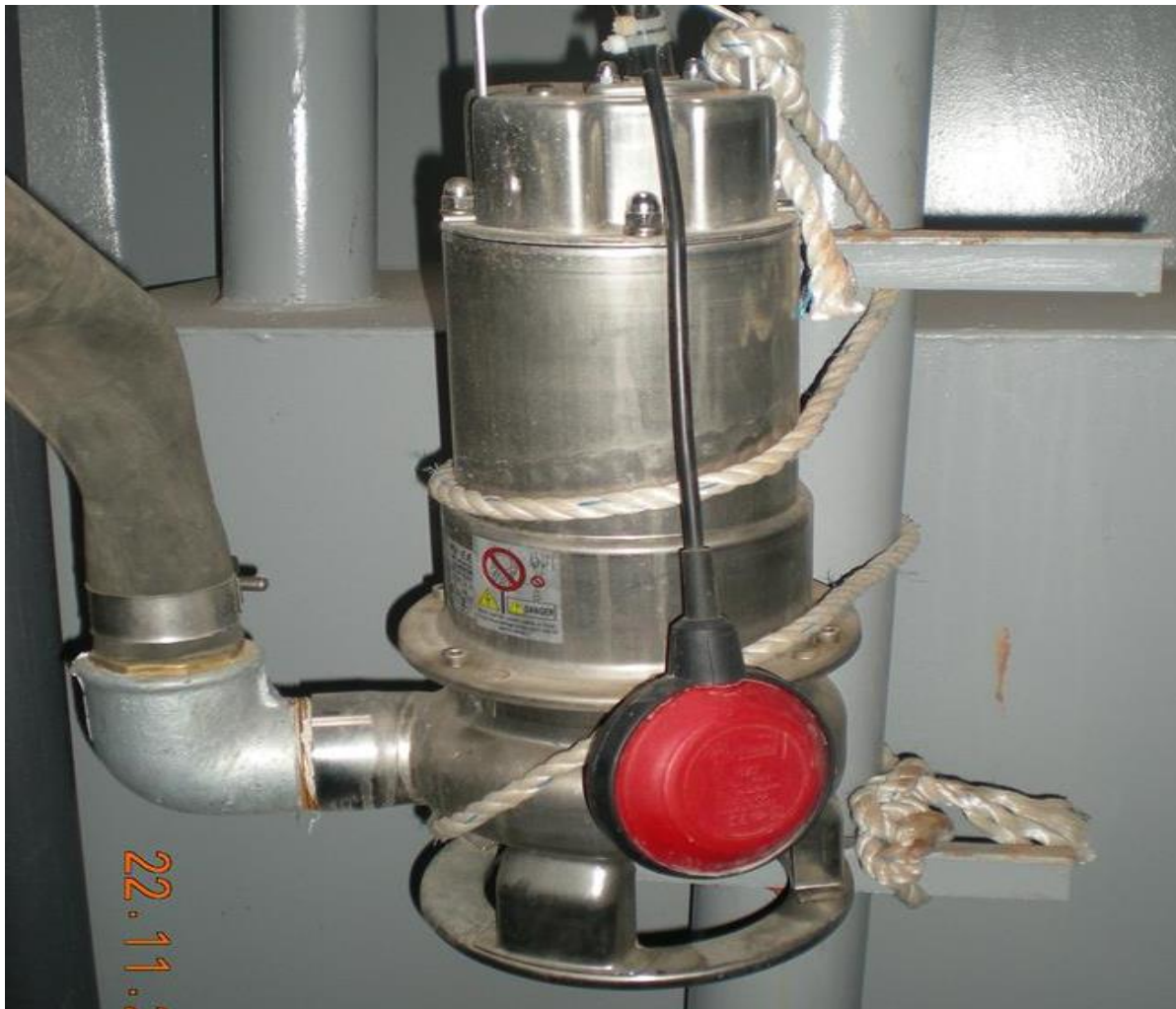
Date : 2018



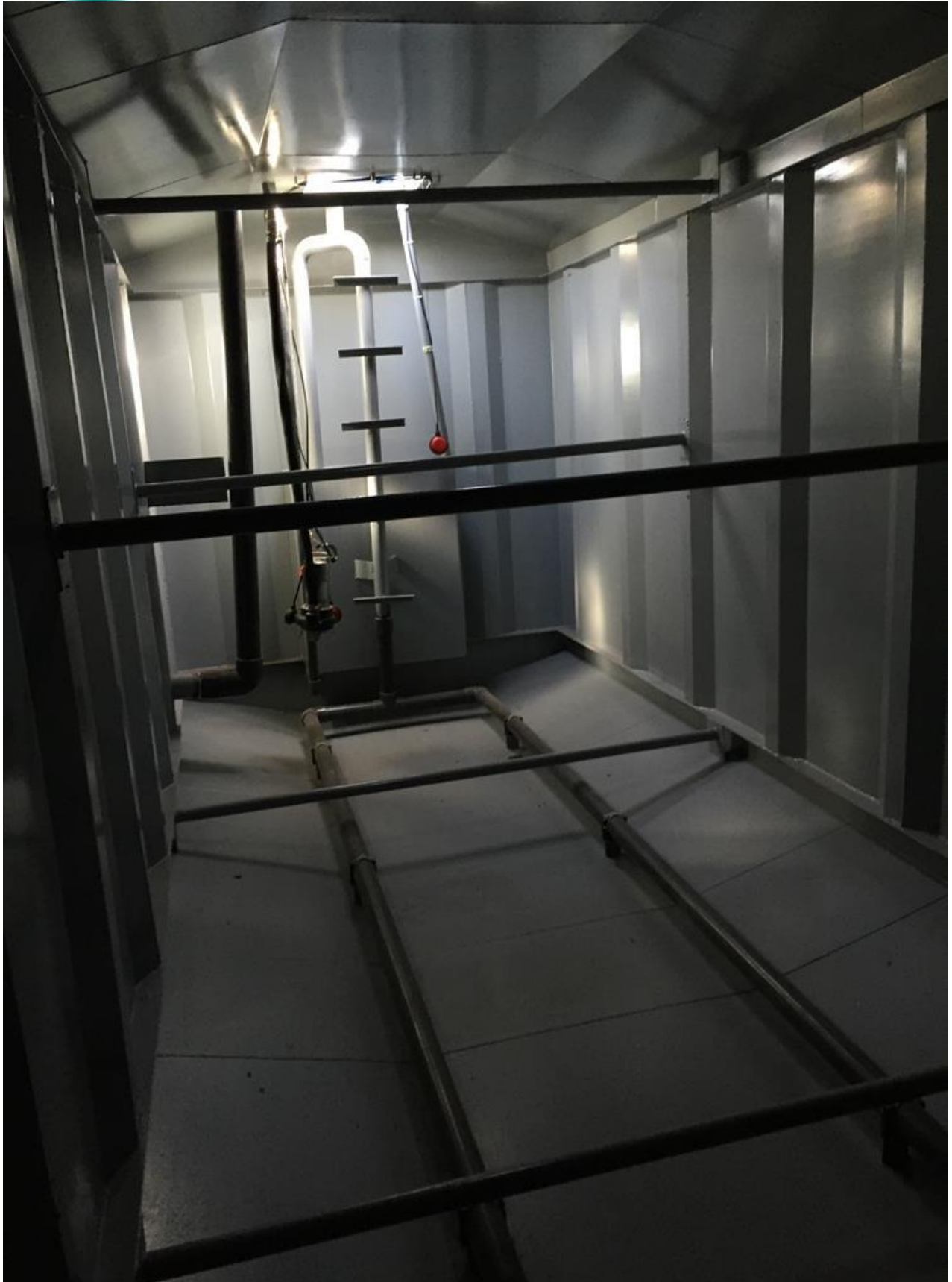
Biological Reactor Installation



Coarse Grain Grid Installation



Booster Tank Submersible Pump Installation



Reactor Pipeline and Chemical Dosing Line Installation and Electrical Connection



Reactor Blower Installation



Discharge Water Chemical Dosing Unit Installation



Electric Cable Tray, Cable and MCC/PLC Panel Installation



Discharge Manhole and Discharge Water Sampling Point

Best Regards
Kemal BOLAT
Project Manager
www.etrasu.com